

Company Profile

WUXI RUIYIYUAN MACHINERY CO.,LTD located in wuxi city, China. A professional supplier that specializing in hydraulic breaker parts, the related excavator accessories and undercarriage parts. With extensive industry experience and a well-established supply chain,we are committed to providing high-quality, efficient products and services to meet the diverse needs of our customers.

Comprehensive Supply Chain

We have established long-term and stable partnerships with the related factories.These factories are equipped with advanced production facilities and technologies,ensuring the quality and timely delivery of our products. We collaborate with several major freight forwarding companies,offering a range of transportation solutions, including sea,air,and land transport.Whether for small orders or bulk shipments,we provide the most optimal shipping plans to meet our clients'needs at the lowest cost.

Service Philosophy

WUXI RUIYIYUAN MACHINERY CO.,LTD always adhere to the business philosophy of"Customer First,Quality Foremost,"not only focuses on product quality and ensuring maximum customers satisfaction but also values long-term cooperation with clients.In the future,we will continue to optimize supply chain management,

improve service levels,and establish mutually beneficial relationships with more domestic and international clients for shared growth and success

We look forward to collaborating with you to explore the market and achieve mutual success.



Contact Information

No.188,Beitang Street,Liangxi District,Wuxi City Jiangsu Province China

Phone:+8618068288618/WhatsApp:+8613646169943

Email:info@ruiyiyuanmachinery.com/eringuo1207@hotmail.com

Website:<https://ruiyiyuanmachinery.com>

WUXI RUIYIYUAN MACHINERY CO.,LTD-Your Trusted Partner.



WeChat



WhatsApp

Hydraulic Breaker Parts



Bush



Seal kit



Piston



Side Bolt



Pin



Through Bolt

Other Attachments & Excavator Parts



Hydraulic Quick Coupler



Air Filter



Lamp/Light



Hydraulic Hose



Bearing/Slewing



Final Drive



RUIYUAN
MACHINERY



CARRIER ROLLER



TRACK ROLLER



COMPLETE UNDERCARRIAGES



HYDRAULIC MOTOR



TRACK SHOE, TRACK BOLT & NUT



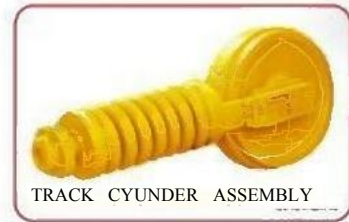
EXCAVATOR



TRENCHLESS DRILLING RIG



IDLER ROLLER



TRACK CYLINDER ASSEMBLY



TRACK CHAIN ASSY



BULDOZER



MOBILE CRUSHER



SPROCKET



CRAWLER DRILL



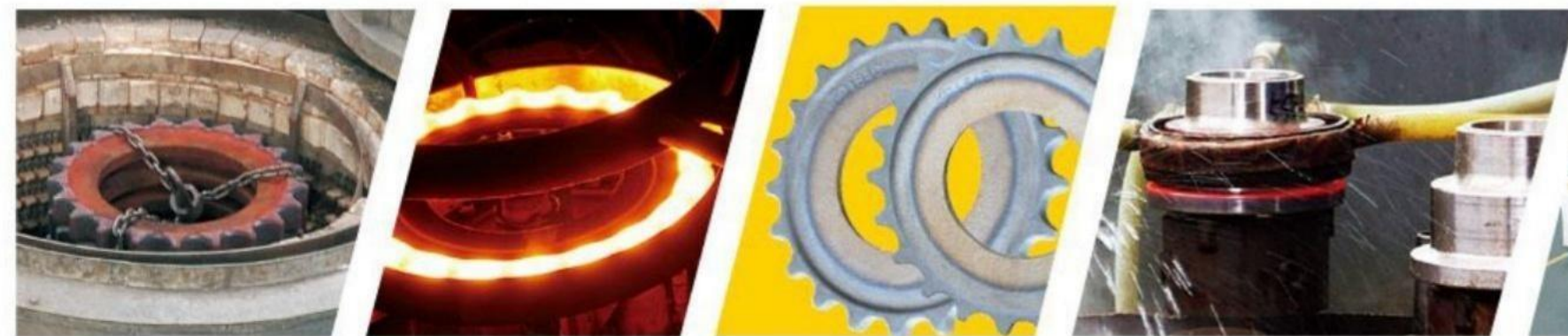
CRAWLER CRANE



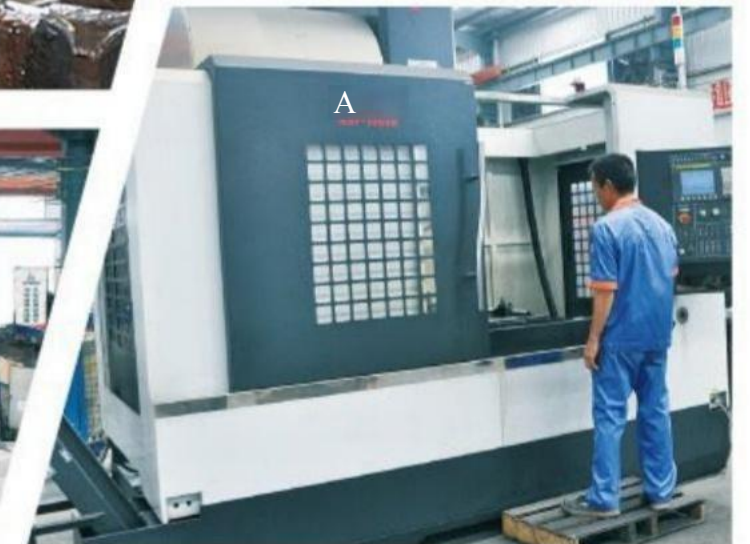
RUIYIYUAN
MACHINERY



Heat Treatment



07 <https://ruiyuanmachinery.com>



Machining

08 <https://ruiyuanmachinery.com>



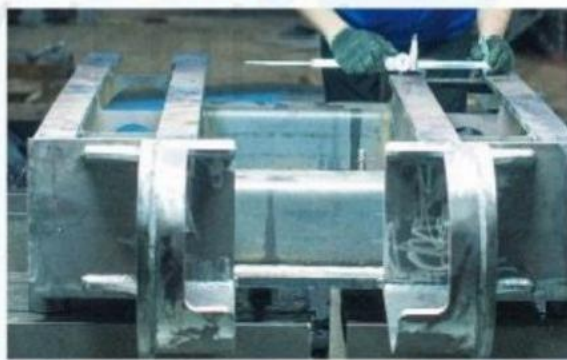
RUIYIYUAN
MACHINERY



Material Arranged



Bend



Welding



Machining

TRACK FRAME WORKING PROCESS CHART »



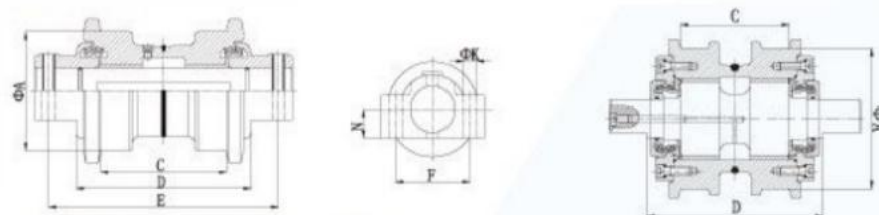
Spray Painting



Assembly



**RUIYIYUAN
MACHINERY**



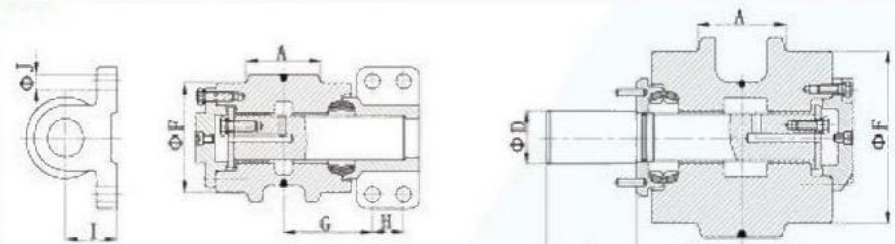
ROLLER REF. TECH

NO.	MODEL	A	C	D	E	F	N	K	MEMO
01	EX100	130	148	213	250	/	/	17	
02	EX200-1	160	174	242	317.5	/	/	18	
03	EX200-5	160	172	242		102	/	19	
04	ZX200	160	169	242	290	/	38	19	
05	EX400	200	210	/	400	125	50	23	
06	E120B(E312)	136	148	/	266	/	32	18	
07	CAT320	155	173	244	296	/	38	21	
08	SK200-3	160	173	230	310	110	26.5	19.5	
09	SK300	180	203	279	358	/	/	23.5	
1	SK320	175	210	280	350	/	42	23.5	
11	PC100-3	130	123	184.5	/	/	15	18	
12	PC200-5	160	173	240	310	/	36	20	
13	PC400-5	200	210	292	/	/	50	24	
14	R290	180	199	256	330.2	/	45	22	
15	DH280-3	168	/	272	/	114.3	43	22	
16	D4D	203	/	/	298.4	89	13	17	
17	D4H	175	143	231	/	/	/	/	
18	D5H	197	172	250.3	/	/	/	/	
19	D6H	210	189.5	263.5	/	/	/	/	
20	D6D	210	189	255	330.5	/	/	20.5	
21	D7G	222	205	288	368.3	/	/	23	
22	D85	222	208	/	380	/	15.5	23.5	
23	BD2	140	/	/	208	60	/	13	
24	VA380	135	112	/	210	80	25.5	15	
25	VA576	126	/	127	/	70	17	13	
26	PCR100	146	/	146	196	/	19	13	





**RUIYIYUAN
MACHINERY**



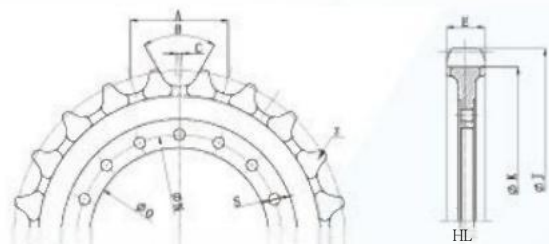
TOP ROLLER REF. TECH

DATA	MODEL	A	B	C	D	F	G	H	I	J	MEMO
01	EX200-1	84	/	/		150	97.5	35	57.5	4-017	
02	EX200-5	84	/	/	/	120	96	35	57.5	4-017	
03	ZX200	84	/	/	/	120	95.5	35	53.5	4-017	
04	EX400	103	/	/	/	160	117.5	65	91	4-019	
05	E120B	72	90	63	41	112	1		/	/	
06	CAT320	84	108	70	47	120	1	/	/	/	
07	E325	97	113.5	75	47	160	/	/	/		
08	E330	97	113.5	75	47	160	/	/	/		
09	PC100-5	/	/	/	/	115	81.5	41	71	4-014	
10	PC200-5	84	119.5	70	55	140	/	/	/		
11	PC300-5	96	116	90	58	168	/	1	/	/	
12	PC400-5	106	116	90	58	168	/	/	/		
13	SK200-3	84	87	70	46	120	/	/	/	/	
14	SK300	95	129.5	70	65	120	/	/	/		
15	SK320-6	95	128	70	66	160	/	/	/	/	
16	R290	96	132.5	85.5	58	168	/	/	/		
17	DH280-3	85			L	142	131	50	111	4-018	
18	D4D	70	91	88	41.5	151	/	/	/	/	
19	DSH	86	115.8	110.7	57.2	172	/	/	/		
21	D60/D65	100	105	96	61	185	/	/	/	/	
22	D61	82	98	92.8	61	165	/	/	/	/	
23	D6D	94	116	87.5	47.7	188	/	/	/	/	
20	D6H	94	115.5	110	57.15	188	1	1	/	/	
24	D7G	98	118.5	100	57	191	/	/	/	/	
25	D85	98	119	120	58	185	/	/	/	/	
26	D155	120	137	139	68	194	/	/	/	/	





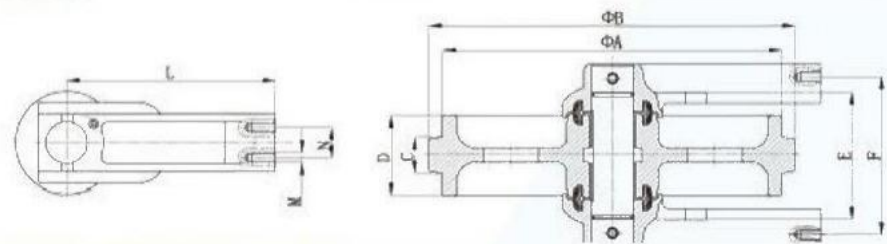
RUIYIYUAN
MACHINERY



SPROCKET REF. TECH

DATA NO.	MODEL	A	B	C	E	H	J	K	O	N	S	Z	M	EMO
01	EX200-1	175.31	60	/	71	21	659	591	415	464	16-022	23		
02	EX200-5	190.03	60	/	70	22	656	584.7	419	464	16-022	21		
03	ZX200	190.03	60	/	70	21	656	584.7	419	464	16-022	21		
04	EX300-1	202.5	55	/	89	25	708	620	465	514	16-022	21		
05	EX400	215.84	60	/	87	28	821	728	556	605	24-024	23		
06	E200B	190	60	10	65	/	656	582	415	455.5	14-021.5	21		
07	CAT320	190	60	7	63	/	660	581	456	496.3	16-021.5	21		
08	E300B	203	60	8	74	/	/	685	450	490	16-021	23		
09	PC60-5	135	50	4	38	/	510	453	265	300	16-017	23		
10	PC100-5	175.47	60	9	40	15	/	540	324	364.5	15-018	21		
11	PC200-5	190.07	60	8.6	70	16.5	/	584.85	474	506	20-019	21		
12	PC400-5	215.84	60	9	90	20	/	725	570	610	26-021	23		
13	PC400-6	228.6	65	10	90	20	/	700	565	607	26-021	21		
14	SK120	171.07	60	7	51	18	601.04	/	324.1	364	15-018	21		
15	SK200-3	190.03	60	10	65	26	656	/	410	449	22-019	21		
16	SK300	203.2	60	8	79	26	773	/	435	476	26-022	23		
17	SK320	213.99	53	9	78	25	735	650	/	493	26-021	21		
18	SH200	190.03	60	8	64	22	650	580	/	440	22-018	21		
19	SH300	202.62	50	8	78	35	765	681	/	472	24-022	23		
20	SE210	171.05	60	6.35	70	18	648	580	402	/	22-017	23		
21	SE280LC-3	203.24	60	6.3	75	24	771	686.6	450.5	/	16-021.5	23		
22	EC290	203.2	60	9.65	84	23	771	686.1	410	/	24-021	23		
23	EC360	216.65	60	/	88	24	748	/	450	490	24-021	21		
24	DH280-3	203.16	60	/	82	24.5	765	/	451	490	16-022	23		
25	R290	202.62	40	8	78	/	768	678	451	490	16-022	23		
26	CR6358	171.45	60	6	61	/	594	524.7	324.2	364.2	15-017.5	21		





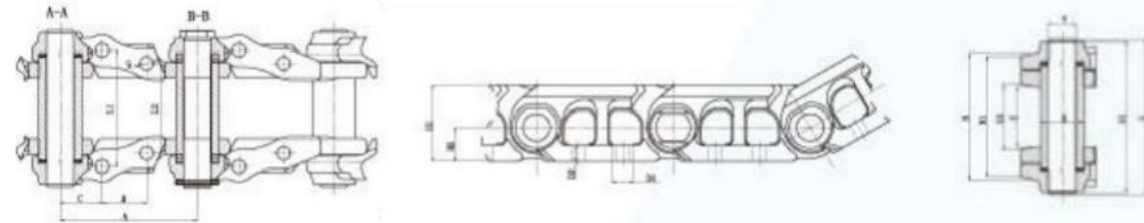
**IDLER ROLLER
DATA**

NO.	MODEL	A	B	C	D	E	F	M	N	L	M	EMO
01	EX100	454	495	/	/	218	257.5	4-M16	70	80		
02	EX100M-5	560	600	/	1	228	285	4-M16	64	86.5		
03	EX200-1	515	555	85	160	/	/	4-M16	64	82.5		
04	EX200-5	506	546	85	160	/	/	4-M16	64	82.5		
05	ZX200	500			159	236.5	282.5	4-M16	64	110		
06	EX400	625	/	/	209	269	328.4	4-M20	85	105		
07	EX450	630	671	105	/	/	330	4-M20	85	108		
08	PC100	489	527	52	/	/	227	4-M14	44	301.5		
09	PC200-5	520	560	/	/	246	280	4-M16	66	197.5		
10	PC400-5	660	705	/	/	290	410	4-M24	66	275		
11	E200B	500	535	/	/	203	270	4-M16	60	300		
12	CAT320	505	547	/	165	207	270	4-M16	60	300		
13	SK200-3	500	535	85	163	232	280	4-M16	/	250		
14	SK300	564	606	102	204	260	314	2-M20	/	300		
15	SK320	564	606	98	204	288	320	2-M20	/	275		
16	SH200	515	555	85	160	203	280	4-M16	90	61		
17	DH280-3	600	650	100	200	236	325	4-M16	70	四		
18	R290	598	650	102	203	290	360	4-M16	65	292		
19	HD450	454	490	70	134	188	241	4-M16	64	82		
20	D4H(FRONT)	475	509	70	135	/	/	/	/	/		
21	D4H(REAR)	500	534	70	135	/	/	/	/	1		
22	D5H	538	578	84	160	7	1	/	/	1		
23	D6H	570	610	94	190	/	/	/	/	/		
24	D6D	677	718	95	189	246	287.5	4-M16	61	86		
25	D7G	750	790	110	203	310	370	2-M16	59	94		
	D85	730	775	100	204	545	388	/		432		





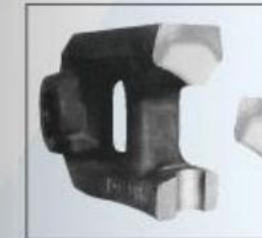
RUIYIYUAN
MACHINERY



LINKASSYREF.TECH

DATA NO.	MODEL	A	B	ΦS	G	H1	L1	L2	N1	U	φX	ΦY	EXCHANGE MODEL
01	SD101A	101.6	/	/	43				78.995	103	32	19	PC200-7
02	SD125A	125		11	56			80	95	130	32	22	FT4314
03	SD125B	125		10.7	56	/		80	95	130	32	21.9	
04	SD135A	135		12.5	/	/	99	72	101.15	141	41.15	24.2	PC60-5
05	SD135B	135		12.5	/	/	99	72	104.09	136	39	22	DH55
06	SD135C	135	/	14.5	/	/	110		112.15	150	41.15	24.2	HD250
07	SD135D	135		12.5	/	/			107.69	140	35.15	22.2	R55
08	SD135E	135	46	12.5			/		84.85	120	35.15	22.2	PC40-7
09	SD135F	135	46	12.5	56	65	/	/	/	139	35	22	AK171
10	SD140A	140		12.3	58	70	/	/		137	37.15	25.15	KT140
11	SD140C	140		12.3	51.6	78				139	42	27	VA1271
12	SD140D	140		12.3	58	70	/	/	/	139	37.18	25.18	FT1351B
13	SD154A	154		14.5	45	74		/	/	130	41.15	24.2	PC60-6
14	SD154B	154	55	14.5	54.6	80	/			155	46.45	30.5	EX60
15	SD154C	154.5	57	14.5	51	87	111.5	81.5	122.33	170	46.45	30.5	PC100-3
16	SD160A	160		14.8	65			/	130	158	45	30	FT4300
17	SD160B	160		14.5	65			/	130	158	45	30	FL6
18	SD171A	171		16.5	73		/	/	138.07	178	50.75	33.4	EX100.EX120.SH120
19	SD171B	171	/	16.5	86.2	/	/	/	165.2	212	53.7	36.5	R200
20	SD175A	175		16.5			102.4	86.4	117.9	166	46.45	30.5	PC100-5
21	SD175B	175	57	18.5	/	/	158.4	122.4	169.85	216	55.3	38	HD700
22	SD1754A	175.4		18.5	/	/	144.5	125.4	166.63	214	58.8	36.5	EX200-1
23	SD190A	190		18.520.5			160.4	124.4			59.3	38	PC200-315
24	SD190B	190		20.5	/		155.6	119.6	/		58.8	36.5	E200B
25	SD203A	203	/	20.3	100.4	116	178.4	138.4	1	/	66.7	44.6	PC300-1
26	SD216A	216	/	22.5	100	116	178.4	140.4	/	/	66.7	44.6	PC300-6

PhysicsAndChemistry Detecting



the chain goes through thermal refining first,and then its chain surface undertakes medium frequency induction.Allthe heattreatmentensure chain strength and wear-resisting propertygreaty.



Afterhardening and tempering,the inner and outer surface ofthe pin will have medium-frequency quenching treatment,which ensures reasonable core strength and the wear resistance of inner and outer surface.



The pin is done the tempering and the surface medium-frequency quenching treatment,which ensures the sufficnt hardness of core and abrasion resistance of external surfaces.





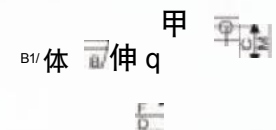
RUIYIYUAN
MACHINERY

TYPE 类型A1

TYPE 类型A2

TYPE类型B1

TYPE类型 B2



TRACK SHOES REF.TECH

NO.	MODEL	TYPE	PITCH	BL径	B1	C	E	F	D	K	M	N	L(customized)
1	D90-06-230	B2	90	010.5		22	40	54		22.5	90	5.5	300
2	D101-06-300	B2	101	010.5		22	55	55		22.5	110	6	300
3	D135A-06-400	A1	135	012.5	014	43.4	72	99	300	20	154	6	400
4	D135E-06-400	A2	135	012.5		46	64	94		20	154	6	400
5	D135G-06-400	A1	135	012.5	014	46	80	104	300	20	154	6	400
6	D135I-06-450	A2	135	013.1		47	76	106		20	154	6	450
7	D135Q-06-300	A2	135	012.5		46	61	85		20	154	6	300
8	D140A-8.5-400	A2	140	012.5		52	86	86		28	163	8.5	400
9	D154A-06-450	A1	154	014.5	016	57	73	89	350	26	166	6	450
10	D154B-06-450	A1	154	014.5	016	55	90	90	350	26	166	6	450
11	D154C-06-450	A1	154	014.5	016	57	82.4	112.4	350	26	166	6	450
12	D160A-8.5-450	A2	160	014.5		56	99	99		34	178	8	450
13	D171A-08-500	A1	171	016.5	018	60.5	108	108	400	28	190	8	500
14	D171B-08-600	A2	171	016.5		58.7	125.4	144.4		28	190	8	600
15	D175A-08-500	A1	175	016.5	018	57	86.4	102.4	400	28	198	8	500
16	D175B-08-600	A2	175	018.5		57	122.4	158.4		34.5	198	8	600
17	D175C-08-600	A2	175.4	016.5		58.7	125.4	144.5		34.5	198	8	600
18	D190A-10-600	A2	190	020.5		62	124.4	160.4		34.5	217.5	8/10	600
19	D190B-10-600	A2	190	020.5		69	119.6	155.6		34.5	217.5	8/10	600
20	D203A-11-600	A2	203	020.5		72.2	138.4	178.4		41	232	11/13	600
21	D203B-11-600	A2	203	021.0		72	129	179		41	232	11/13	600
22	D203C-11-600	A2	203	022.5		72.2	138.4	178.4		41	232	11/13	600
23	D216A-11-600	A2	216	022.5		76.2	140.4	178.4		41	250	11/13/14	600
24	D216B-11-600	A2	216	022.5		76.2	146	184		41	250	11/13/14	600
25	D216C-11-600	A2	216	022.5		76	140	190		41	250	11/13/14	600
26	D228A-17-600	A2	228	024.5		76.2	144	184		57	258	17	600
27	D260A-20-650	B2	260	027.5		76.2	184.1	234.9		73.5	306	20.5	650



Hydraulic Cylinder/Piston/ Cylinder Head /Cylinder Barrel



Bucket



Blade Angle Plate /Grader Blade



Bucket Tooth /Tooth Holder

